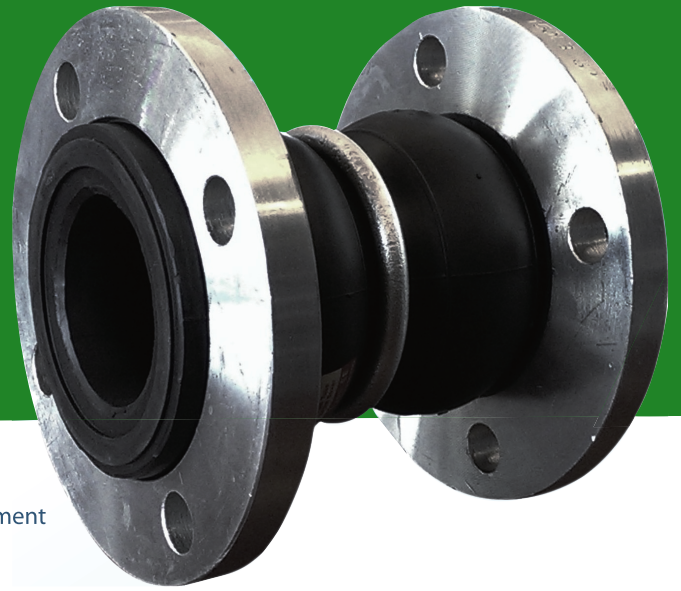


Shoreline Technology

Double Spheres Rubber Expansion Joint

MR5000



Features

Shortline Technology expansion joints are designed to accommodate misalignment and both axial and lateral movement. They are also used to absorb thermal expansion, reduce noise and vibration from mechanical equipments. Due to their available type of materials, MR5000 series are suitable for a variety range of media. In all, MR5000 series rubber expansion joints are ideal to be used to protect and serve your piping systems.

Application

Color Code	Inner Material	Cover Material	Application
Blue	Neoprene	Neoprene	Excellent Aging resistance, for alkaline and acid salt soultions and aldehydes.
Red	EPDM	EPDM	Higher temp. good ozone resistance, resilience, bend easier lower temp, but not suitable for oils.
Black	Butyl	Butyl	Lower impermeable; resistance offer to ozone, weather, abrasion, chemical.
Yellow	Nitrile	Neoprene	Recommend for oils, greases, petrol, fats, glycols, alcohols, ethers and gas.
White	Nitrile	Nitrile	For drinking water or food grade white color quality up to 150 psi/10bar at 158°F/70°C
Green	Hypalon	Hypalon	Ozone resistance sunlight stable, for strong acids, alkalis and chemicals.

Specification

Nominal Diameter		Length (inch)	Travel (mm)	Allowable Movement				Pressure	
Model MR	(inch)		Total Com- pressed Extended	Axial Compression (in.)	Axial Extension (in.)	Lateral Deflection (in.)	Angular Deflection (deg.)	Positive ¹ (psig.)	Negative ² (Vacuum) (in.Hg)
5012	1-1/4"	7	125-205	2	1	1.75	35	225	26
5015	1-1/2"	7	125-205	2	1	1.75	35	225	26
5020	2"	7	125-205	2	1	1.75	35	225	26
5025	2-1/2"	7	125-205	2	1.38	1.75	35	225	26
5030	3"	7	125-205	2	1.38	1.75	35	225	26
5040	4"	9	175-260	2	1.38	1.5	35	225	26
5050	5"	9	175-260	2	1.38	1.5	30	225	26
5060	6"	9	175-260	2	1.38	1.5	30	225	26
5080	8"	13	275-360	2.5	1.38	1.25	30	225	26
5100	10"	13	275-360	2.5	1.38	1.25	30	225	26
5120	12"	13	275-360	2.5	1.38	1.25	20	225	26
5140	14"	14	305-380	1.5	1.1	1.1	20	150	26
5160	16"	14	305-380	1.5	1.1	1.1	20	150	26
5180	18"	14	305-380	1.5	1.1	1.1	20	150	26
5200	20"	14	305-380	1.5	1.1	1.1	20	150	26

FOR PRODUCT SELECTION, PLEASE CONTACT US FOR PROFESSIONAL ADVICE.

Note:

- 1: The pressure rating is at 175°F. As Temperature Increases, the pressure rating is reduced.
- 2: For vacuum application, please contact us for professional advice.
- 3: For size from 8"~12", control unit installation is required for working pressure at 225 psig.
- 4: For size from 14"~24", control unit installation is required for working pressure at 150 psig.

Shoreline Technology
46734 Fremont Blvd., Fremont CA 94538

T: (510) 897-6670
E: sales@shorelinetek.com
W: shorelinetek.com